



Location Highlights

Located in the quickly growing Taylors area, with units available ranging from 500 to 4200 SQ FT.

Suites are build-to-suit to meet your unique business needs.

Other current tenants include Angry Goat Landscaping and Construction Clean Up, Apex Custom Home Cabinetry, and Greenville Home Buyers.

Property Details

745 SQ FT

\$8 / SQ FT NNN

Available Immediately

CONTACT

Donnie Shaw | (864) 520-0191
donshaw@shawresourcesinc.com

Ron Shaw | (864) 520-0197
ronshaw@shawresourcesinc.com

Joseph Fuduric | (864) 520-0189
joseph@shawresourcesinc.com



CONTACT

Donnie Shaw | (864) 520-0191
donshaw@shawresourcesinc.com

Ron Shaw | (864) 520-0197
ronshaw@shawresourcesinc.com

Joseph Fuduric | (864) 520-0189
joseph@shawresourcesinc.com

GEOGRAPHIC OVERVIEW

Tax Map	T0300000100302
GLA	26,768 SQ FT
Zoning	S-1
County	Greenville
Municipality	Greer
Zip Code	29687



Population*

132,405



Yearly Growth
Rate

1.20%



Median
Household
Income

\$59,093



Income
Per Capita

\$33,793



High School
Graduate

17.5%



Some College -
Bachelor's Degree

55.9%



Graduate or
Professional Degree

15.8%

*All data based on a five-mile radius. Source: 2019 esri™ Market Report.

CONTACT

Donnie Shaw | (864) 520-0191
donshaw@shawresourcesinc.com

Ron Shaw | (864) 520-0197
ronshaw@shawresourcesinc.com

Joseph Fuduric | (864) 520-0189
joseph@shawresourcesinc.com



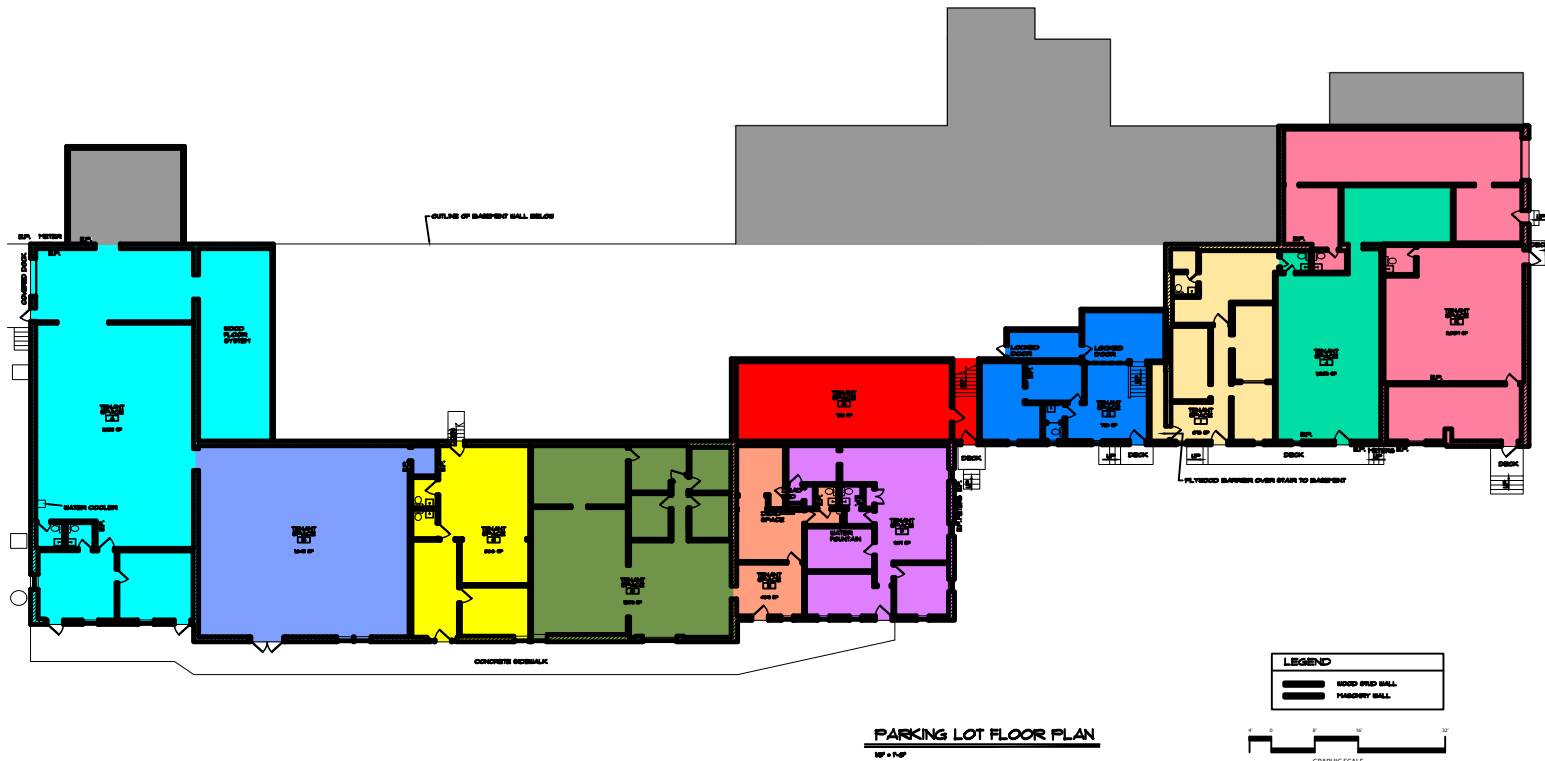
CONTACT

Donnie Shaw | (864) 520-0191
donshaw@shawresourcesinc.com

Ron Shaw | (864) 520-0197
ronshaw@shawresourcesinc.com

Joseph Fuduric | (864) 520-0189
joseph@shawresourcesinc.com





CONTACT

Donnie Shaw | (864) 520-0191
donshaw@shawresourcesinc.com

Ron Shaw | (864) 520-0197
ronshaw@shawresourcesinc.com

Joseph Fuduric | (864) 520-0189
joseph@shawresourcesinc.com

