



## Location Highlights

High visibility from I-385

Minutes from Woodruff Road and Mauldin

In the same business park as Truist Financial, J.Peters, Shaw Resources, and Courtyard Marriott

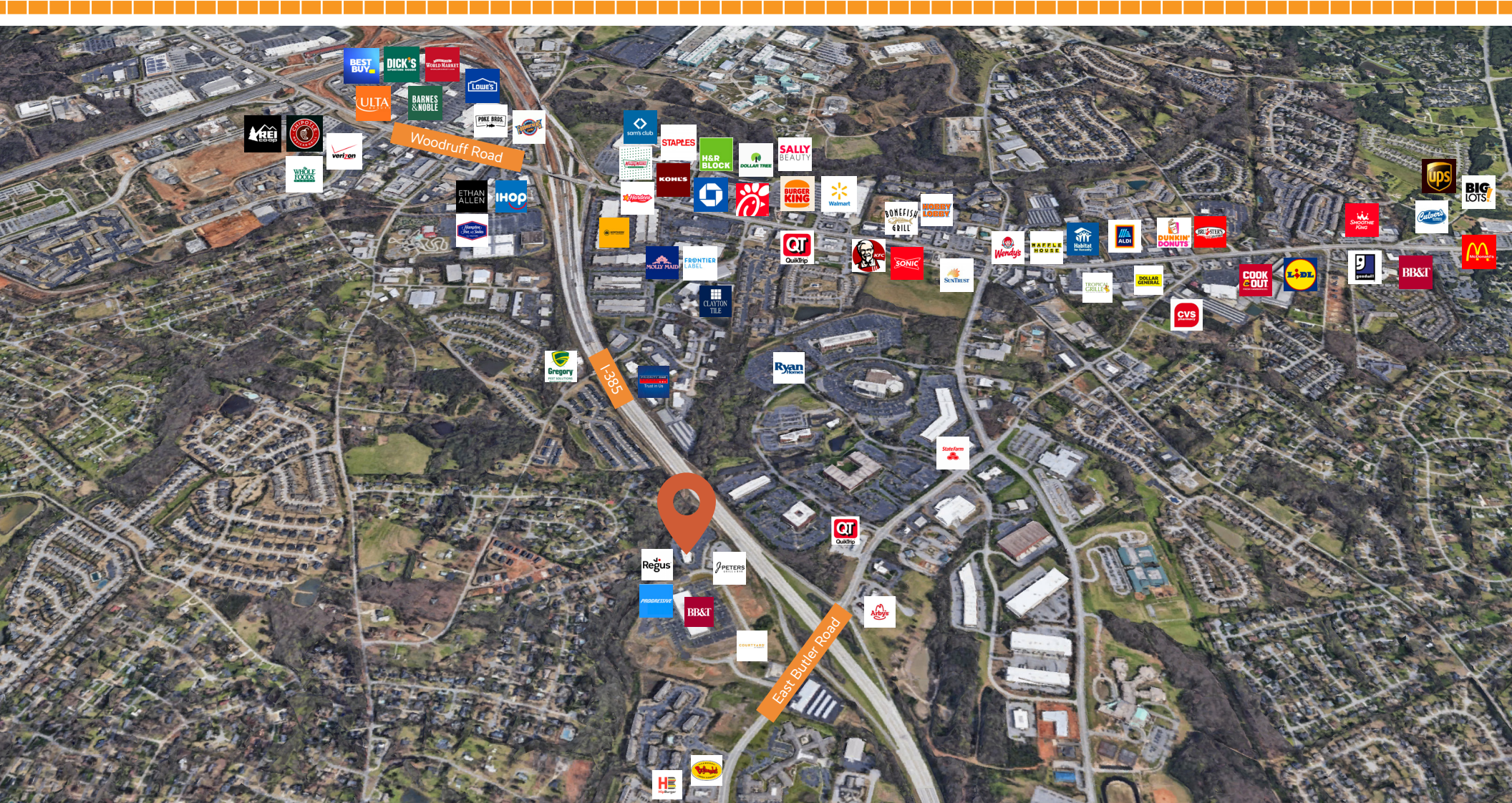
Pedestrian walkway around business park perimeter

## CONTACT

Donnie Shaw  
donshaw@shawresourcesinc.com

Ron Shaw  
ronshaw@shawresourcesinc.com

(864) 233-6391



## CONTACT

Donnie Shaw  
[donshaw@shawresourcesinc.com](mailto:donshaw@shawresourcesinc.com)

Ron Shaw  
[ronshaw@shawresourcesinc.com](mailto:ronshaw@shawresourcesinc.com)

(864) 233-6391

## GEOGRAPHIC OVERVIEW

Tax Map	0546130100700
GLA	5,798 SQ FT
Zoning	C-2
County	Greenville
Municipality	Mauldin
Zip Code	29607



Population\*

123,448



Yearly Growth  
Rate

1.76%



Median  
Household  
Income

\$74,031



Income  
Per Capita

\$39,697



High School  
Graduate

15.3%



Some College -  
Bachelor's Degree

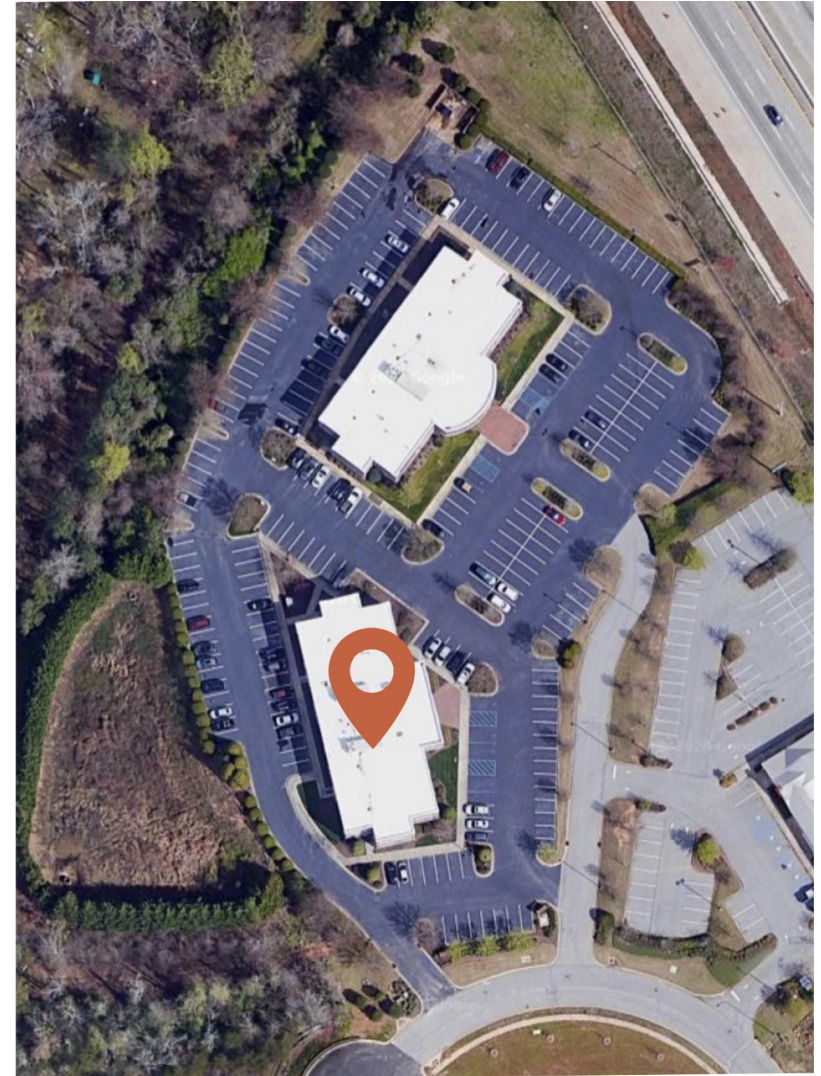
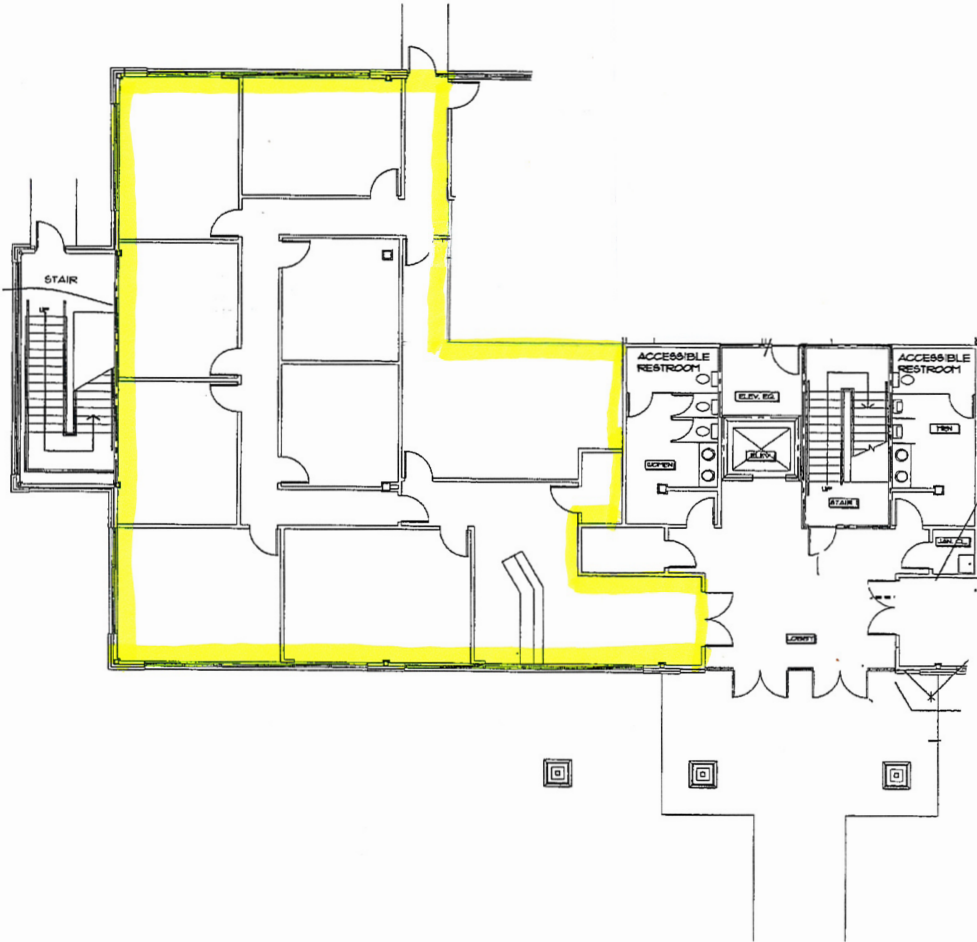
58.8%



Graduate or  
Professional Degree

18.5%

\*All data based on a five-mile radius. Source: 2019 esri™ Market Report.



## CONTACT

**Donnie Shaw**  
donshaw@shawresourcesinc.com

**Ron Shaw**  
ronshaw@shawresourcesinc.com

**(864) 233-6391**

