



Location Highlights

High-exposure location off of Wade Hampton, close to Wal-Mart, ALDI, and Taylors neighborhoods

Varied tenant mix with easy access and ample parking

Individual storefronts suitable for office or retail use

CONTACT

Donnie Shaw
donshaw@shawresourcesinc.com

Ron Shaw
ronshaw@shawresourcesinc.com

(864) 233-6391



CONTACT

Donnie Shaw
donshaw@shawresourcesinc.com

Ron Shaw
ronshaw@shawresourcesinc.com

(864) 233-6391

GEOGRAPHIC OVERVIEW

Tax Map	T0300000600700
GLA	16,250 SQ FT
Zoning	C-2
County	Greenville
Municipality	Greer
Zip Code	29687



Population*

157,181



Yearly Growth
Rate

1.43%



Median
Household
Income

\$52,726



Income
Per Capita

\$32,898



High School
Graduate

17.0%



Some College -
Bachelor's Degree

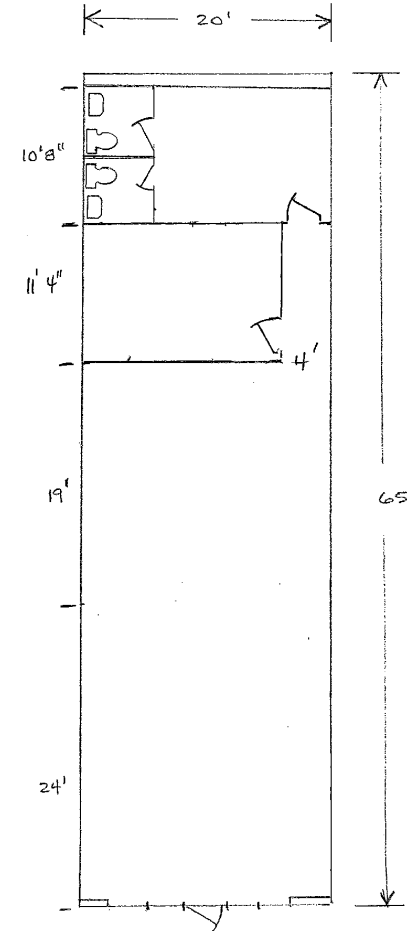
53.7%



Graduate or
Professional Degree

15.5%

*All data based on a five-mile radius. Source: 2019 esri™ Market Report.





CONTACT

Donnie Shaw
donshaw@shawresourcesinc.com

Ron Shaw
ronshaw@shawresourcesinc.com

(864) 233-6391