



RUTHERFORD ROAD EXT

3400 Rutherford Road Extension, Taylors, SC 29687



Location Highlights

Office/warehouse space for lease

Located in the quickly growing Taylors area, with units available ranging from 500 to 4200 SQ FT

Suites are build-to-suit to meet your unique business needs

CONTACT

Donnie Shaw
donshaw@shawresourcesinc.com

Ron Shaw
ronshaw@shawresourcesinc.com

(864) 233-6391



CONTACT

Donnie Shaw
donshaw@shawresourcesinc.com

Ron Shaw
ronshaw@shawresourcesinc.com

(864) 233-6391

GEOGRAPHIC OVERVIEW

Tax Map	T0300000100302
GLA	26,768 SQ FT
Zoning	S-1
County	Greenville
Municipality	Greer
Zip Code	29687



Population*

132,405



Yearly Growth
Rate

1.20%



Median
Household
Income

\$59,093



Income
Per Capita

\$33,793



High School
Graduate

17.5%



Some College -
Bachelor's Degree

55.9%



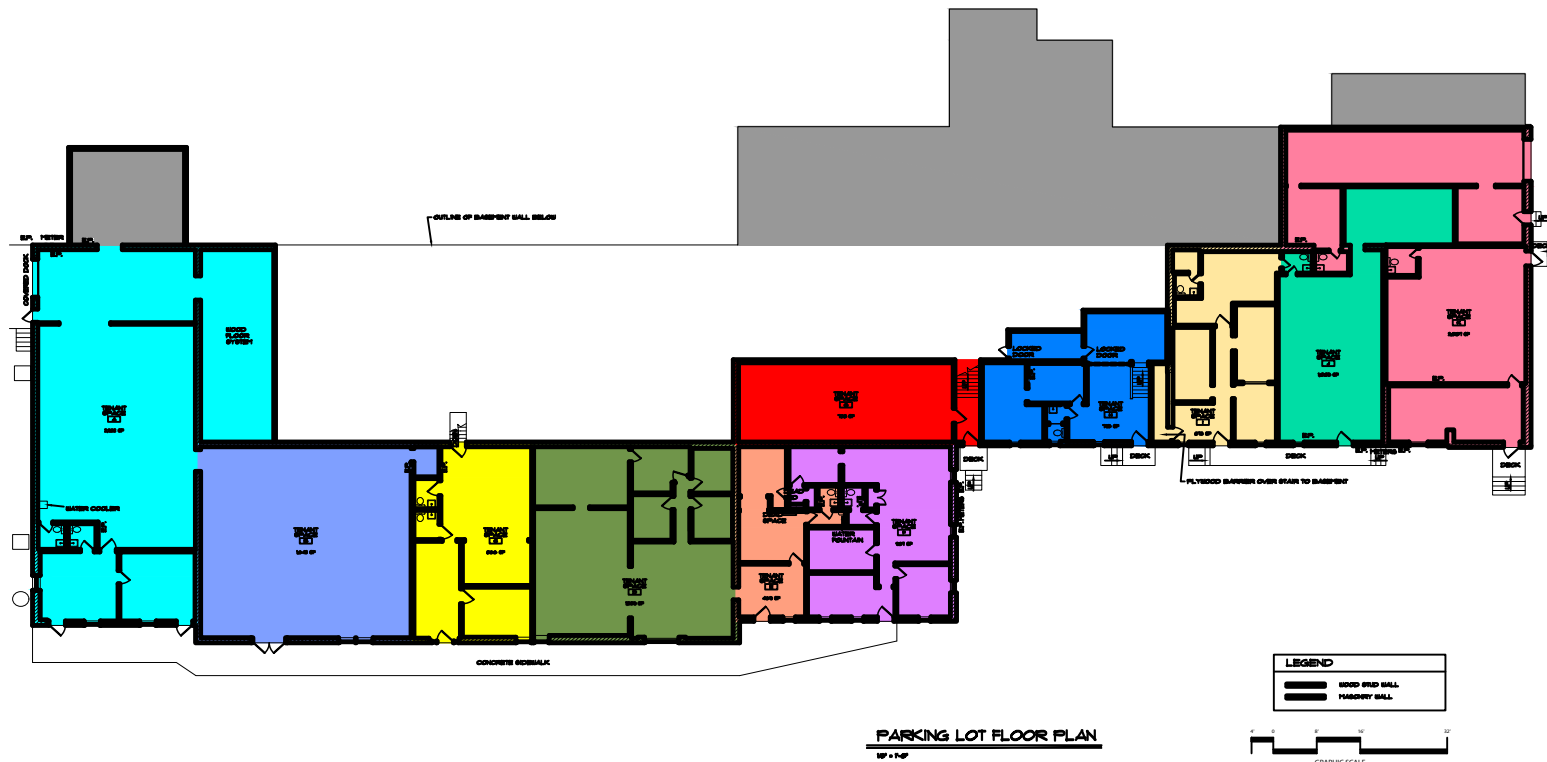
Graduate or
Professional Degree

15.8%

*All data based on a five-mile radius. Source: 2019 esri™ Market Report.







CONTACT

Donnie Shaw
donshaw@shawresourcesinc.com

Ron Shaw
ronshaw@shawresourcesinc.com

(864) 233-6391

