



## Location Highlights

Office / Retail for Lease

High exposure location at the corner of Wade Hampton Boulevard and McKinney Lane, next to Botany Woods neighborhood

Spacious, updated units and facilities

## CONTACT

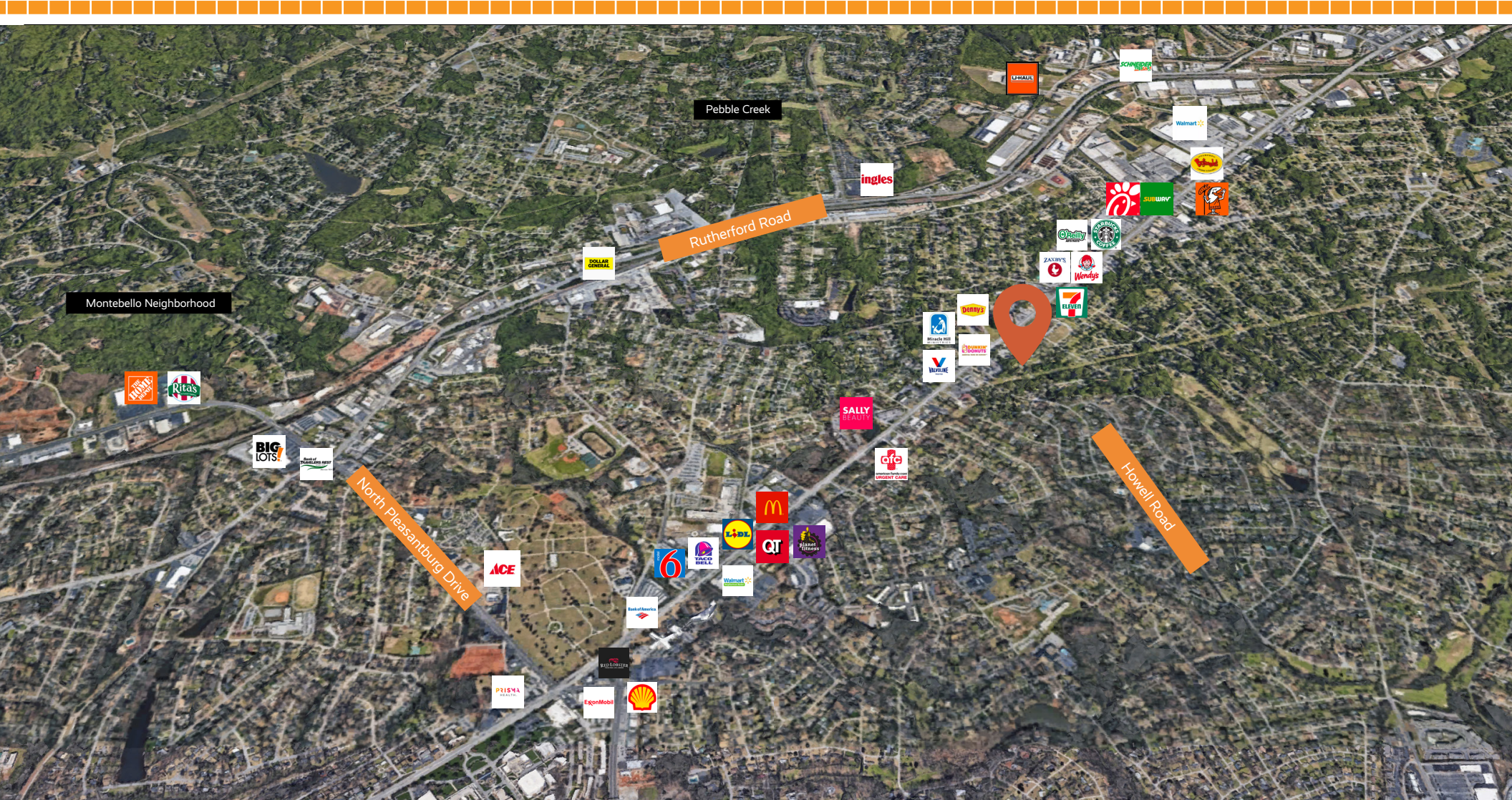
Donnie Shaw  
donshaw@shawresourcesinc.com

Ron Shaw  
ronshaw@shawresourcesinc.com

(864) 233-6391







## CONTACT

Donnie Shaw  
donshaw@shawresourcesinc.com

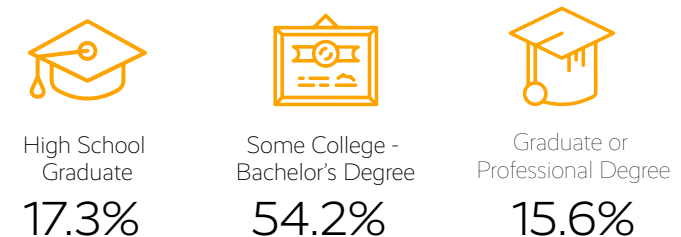
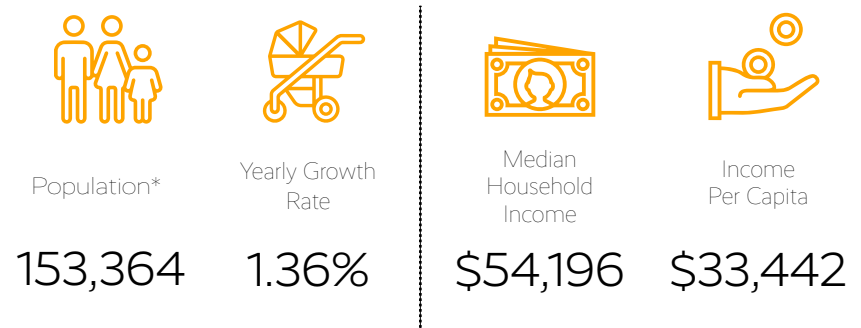
Ron Shaw  
ronshaw@shawresourcesinc.com

(864) 233-6391



## GEOGRAPHIC OVERVIEW

Tax Map	P015100115300
GLA	2,450 SQ FT
Zoning	C-2
County	Greenville
Municipality	Greenville
Zip Code	29615



\*All data based on a five-mile radius. Source: 2019 esri™ Market Report.

## CONTACT

**Donnie Shaw**  
donshaw@shawresourcesinc.com

**Ron Shaw**  
ronshaw@shawresourcesinc.com

**(864) 233-6391**

